

Arduino + mBlock5



FATECINO
Clube de Arduino
Fatec Jundiai

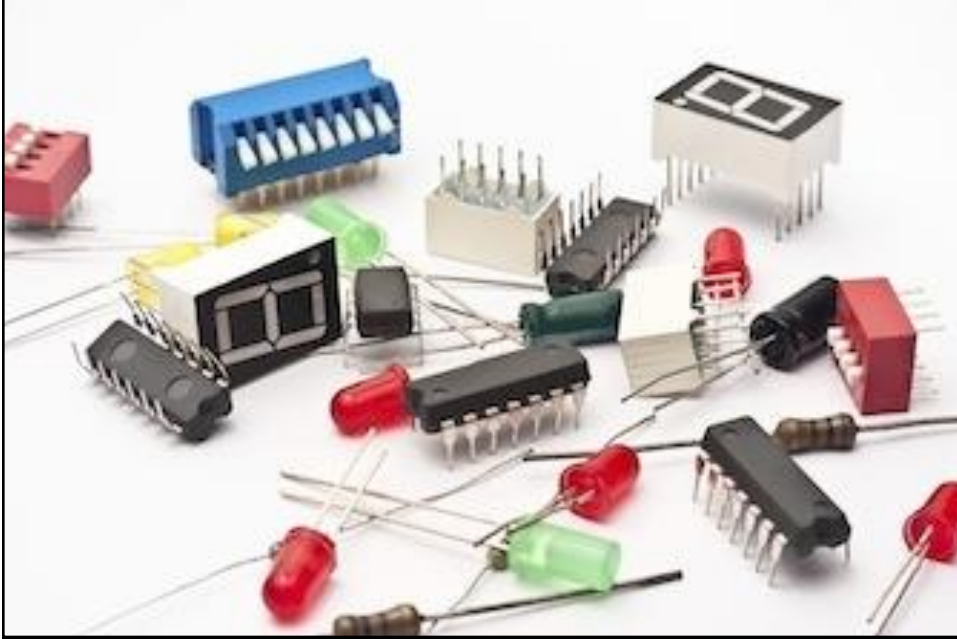
Cláudio Luís V. Oliveira
Humberto Augusto P. Zanetti

1



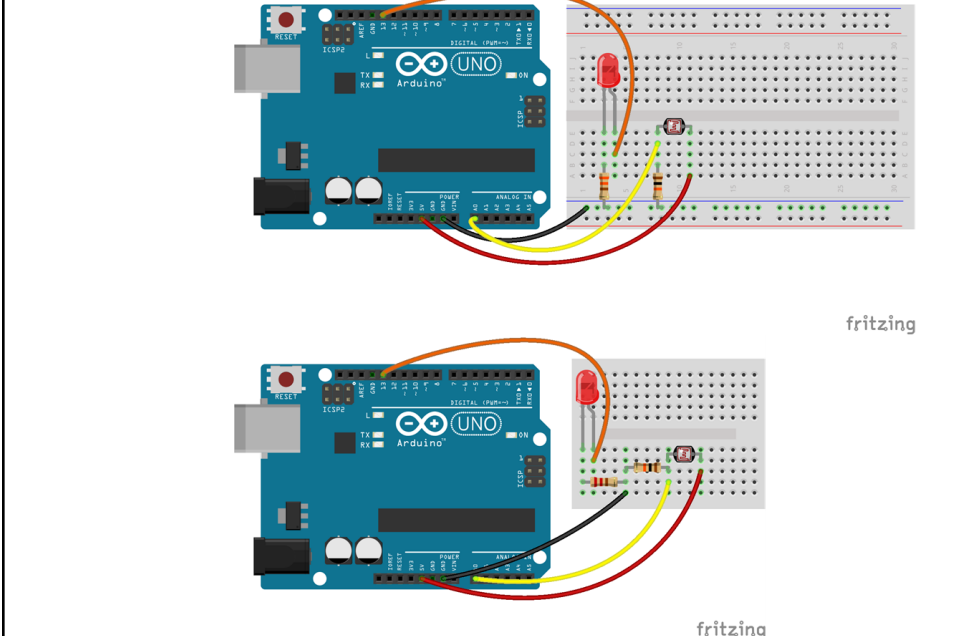
2

Componentes Eletrônicos



3

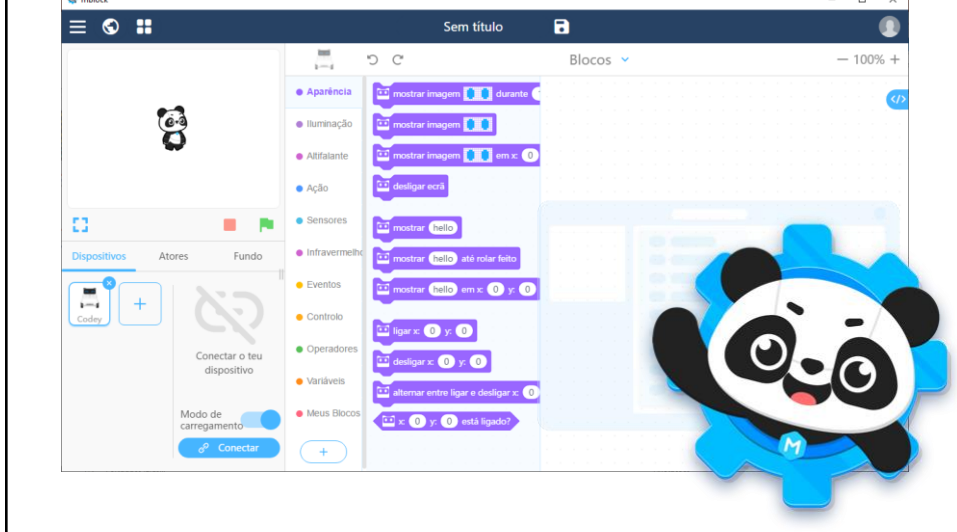
Montagem do Sensor de Luz



4

mBlock5

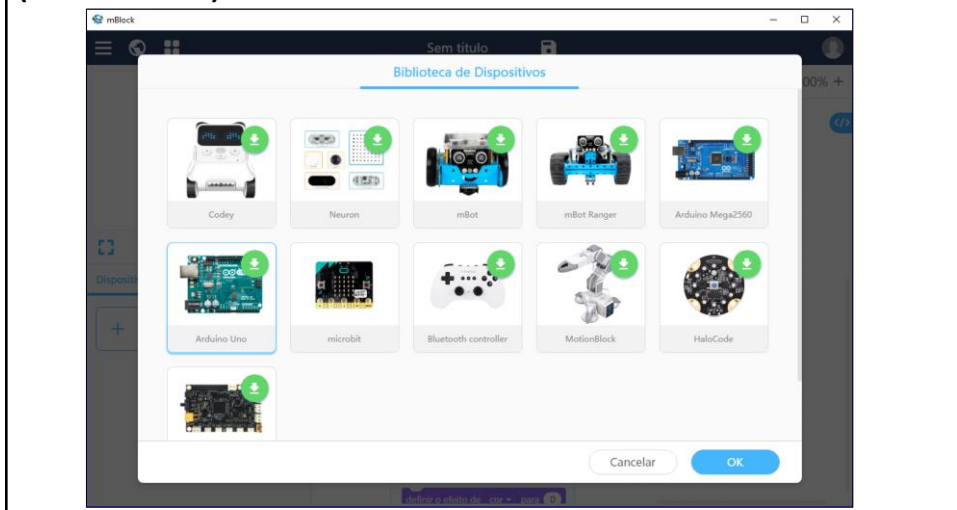
<https://www.mblock.cc>



5

mBlock5

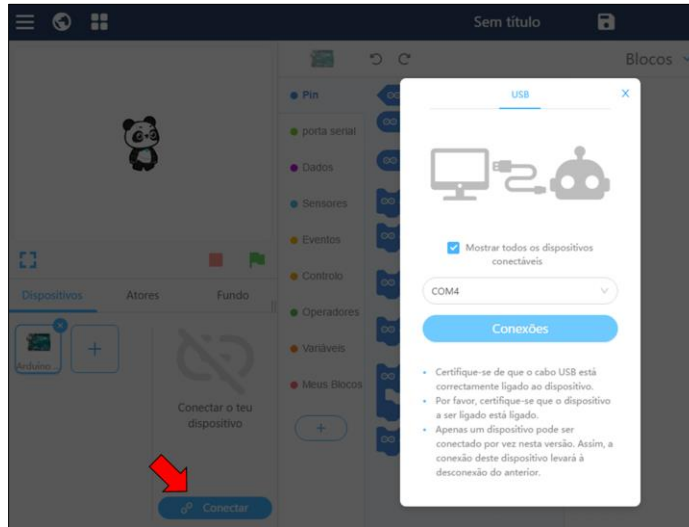
Clique a aba “dispositivos”, depois em + (adicionar) e seleccione o “Arduino Uno”:



6

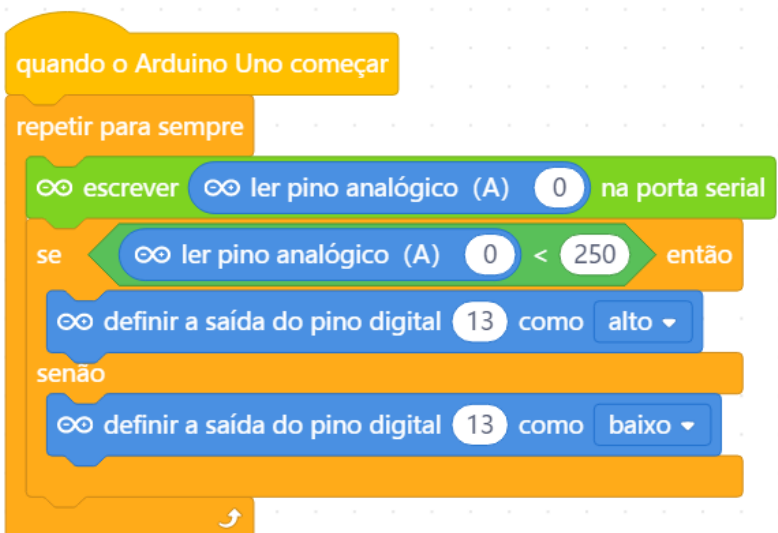
mBlock5

Conectar ao Arduino:



7

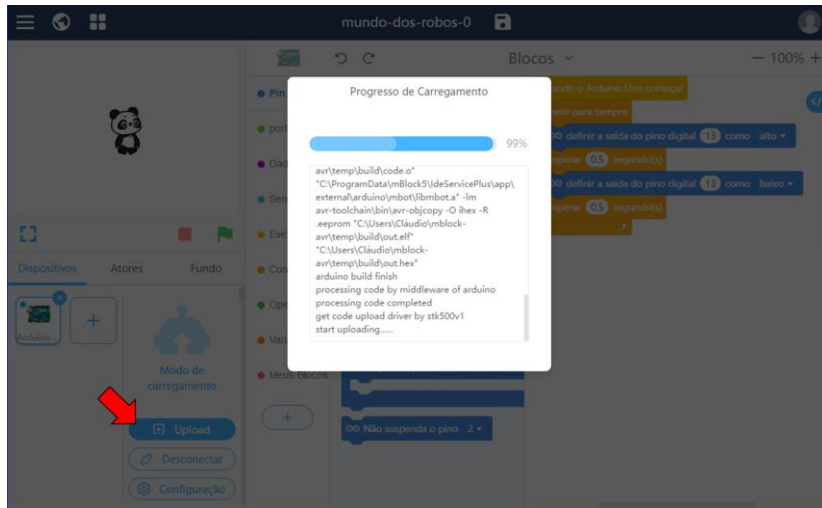
Programa do Sensor de Luz



8

mBlock5

Transferir o programa para o Arduino:



9



10